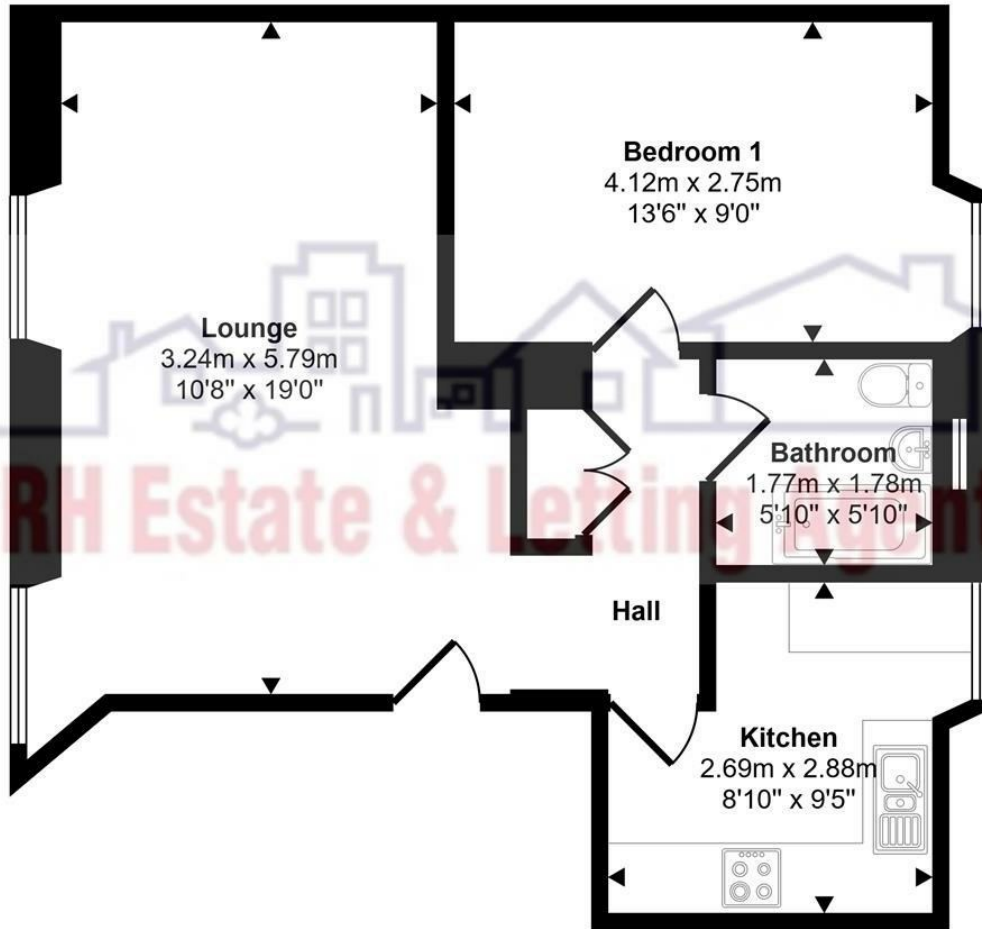


Approx Gross Internal Area
51 sq m / 551 sq ft



Marazion

£675 Per Month PCM



The accuracy of these particulars is not guaranteed nor do they form part of any contract. Applicants should verify details by personal examination and enquiry.

PRH is a trading name of PRH Lettings Limited. Registered office: 15 Alverton Street, Penzance, Cornwall, TR18 2QP. Registered in England No. 6667569



4 The Green Market, Penzance, Cornwall, TR18 2SH T: 01736 363816 E:mail@prhpenzance.co.uk

Flat 2 West End Cottages
Marazion
TR17 0EL

£675 Per Month

KEY FEATURES

- First Floor Apartment
- Sea Views
- Garden
- Available as a long let
- One Bedroom
- EPC E 48 81
- Due to a superior lease we are unable to accept pets in this property

DIRECTIONS

As you leave Penzance on Chyandour Cliff, proceed east towards Long Rock. Continue along the coast road as it leads into Marazion. The road will become West End Road, where the apartment is situated on the left-hand side, just prior to The Tudor Chippy.

Situated in the popular market town of Marazion is this one bedroom first floor flat which benefits from both garden and a sea view. The property is available and as a long let. The accommodation comprises of a lounge, kitchen, bathroom, bedroom and a garden.

SERVICES: Mains Electric, Water & drainage

HEATING: Electric Room Heaters

EPC: E (48 81)

*Ofcom suggest ultrafast broadband is available and that mobile coverage is good on most networks. Due to a superior lease we are unable to accept pets in this property. Available as a long let **£675 pcm Rent
£675 Deposit
Available immediately*

